

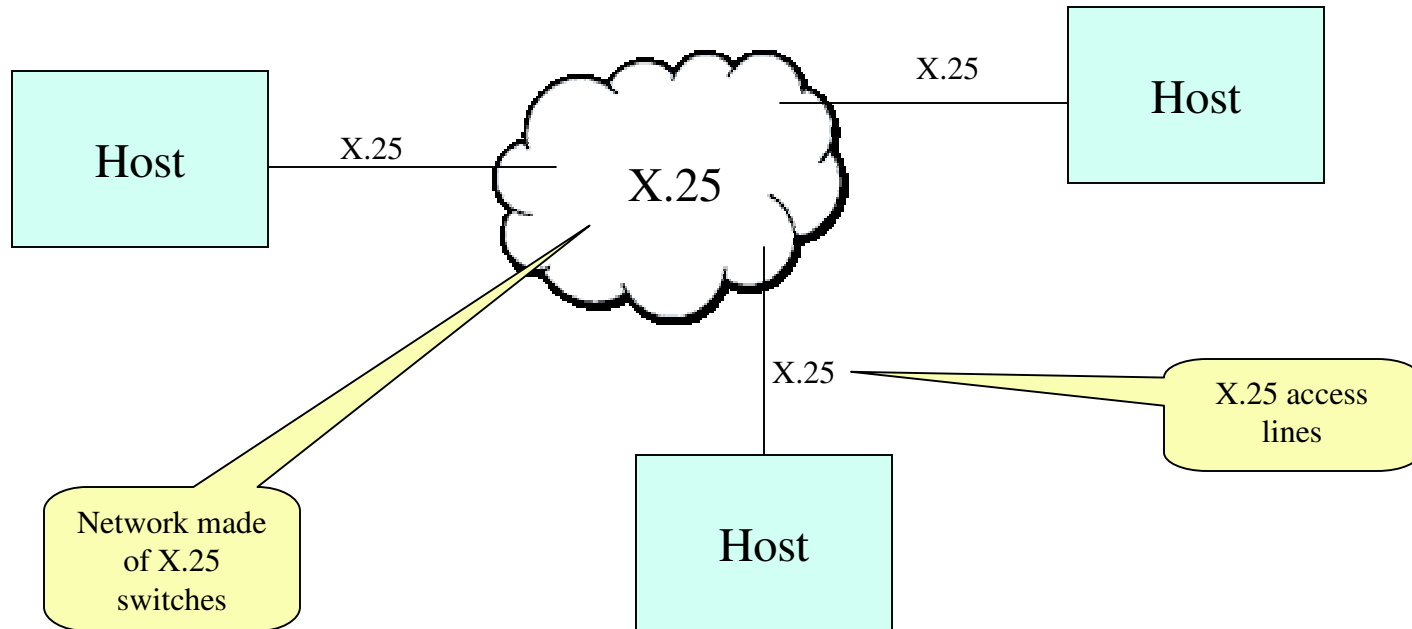
Gcom and X.25

The Gcom Protocol Appliance (GPA) can play an important role in migrating X.25 networks to more modern technology.

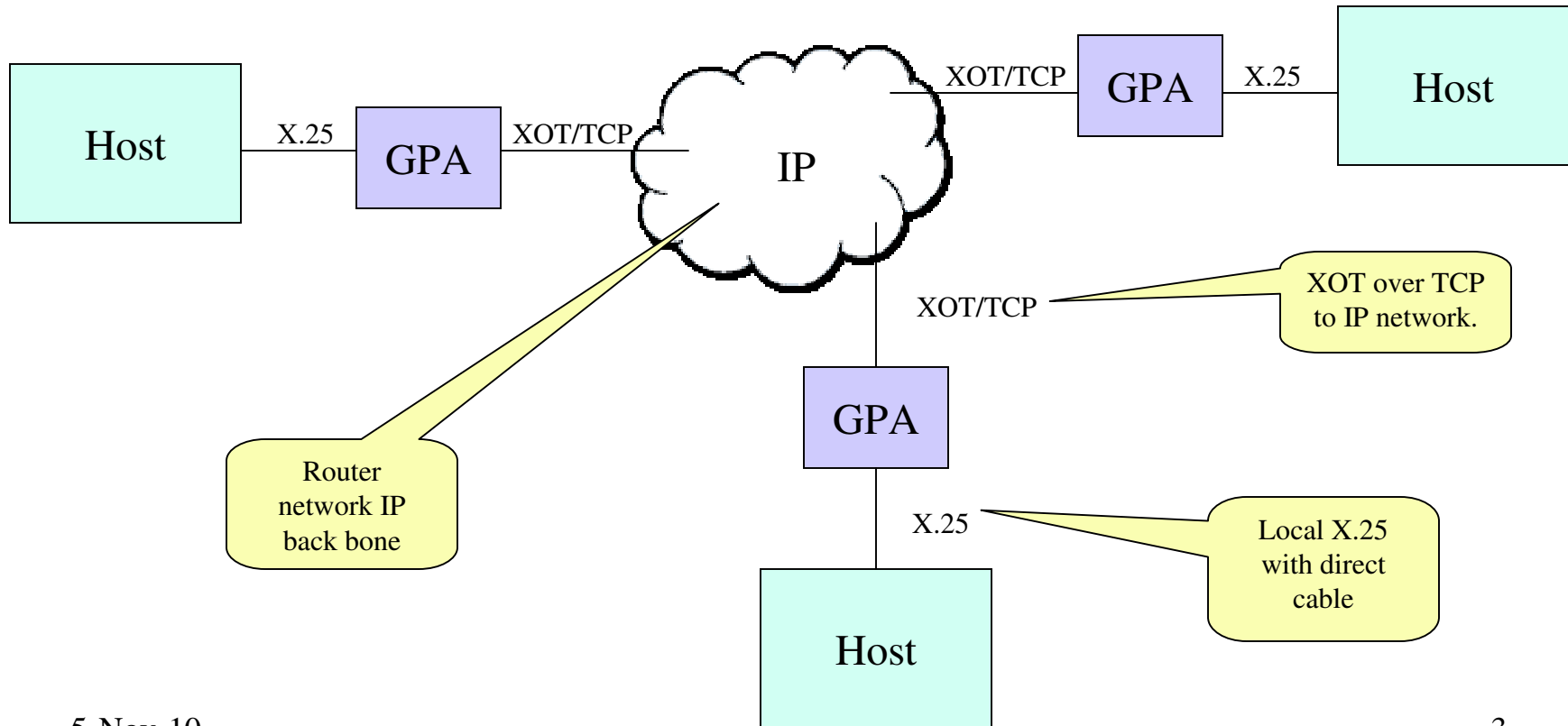
You can use the GPA to replace X.25 switches with an IP backbone, retaining X.25 interfaces.

You can use the GPA to translate X.25 to TCP as some sites migrate to TCP, retaining the ability to communicate with X.25 sites.

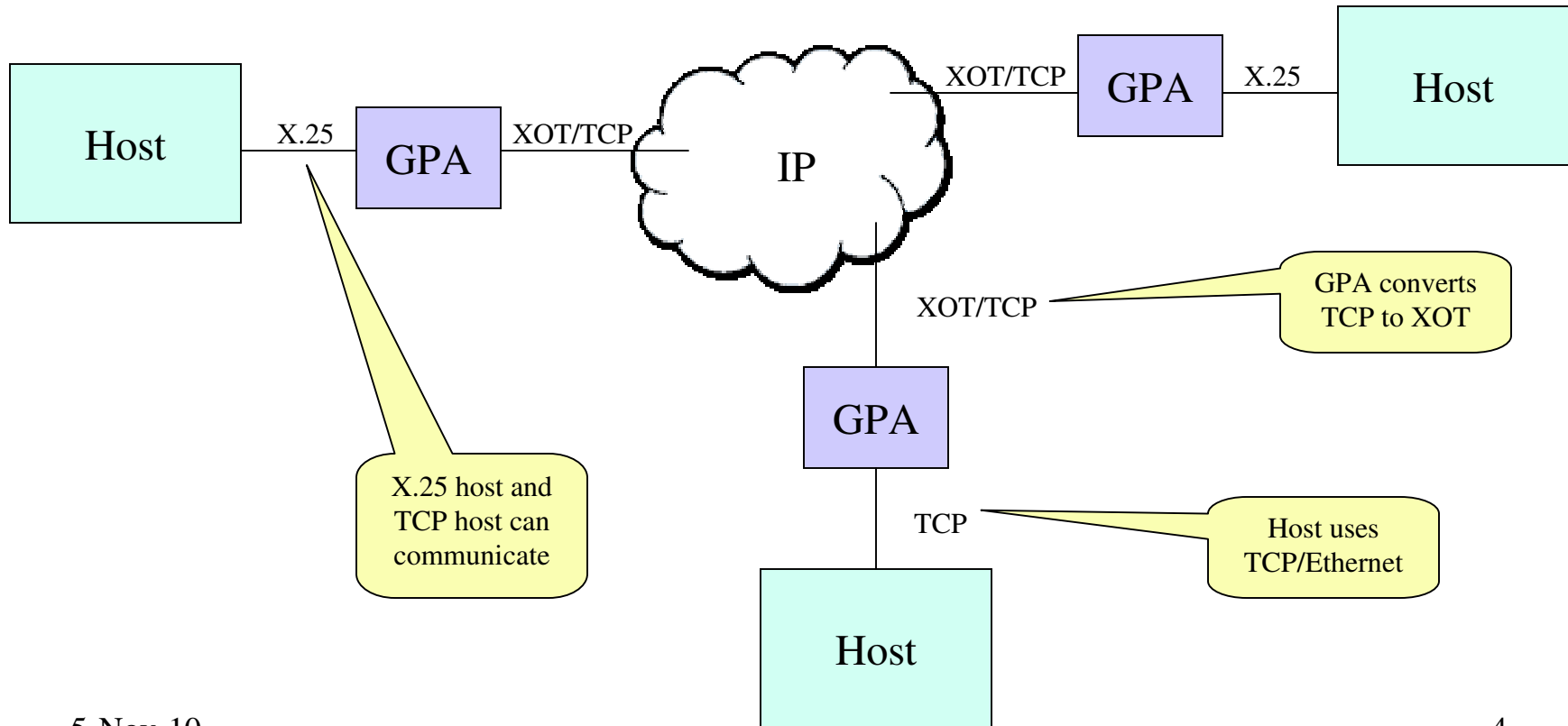
X.25 Network



X.25 Using IP and XOT

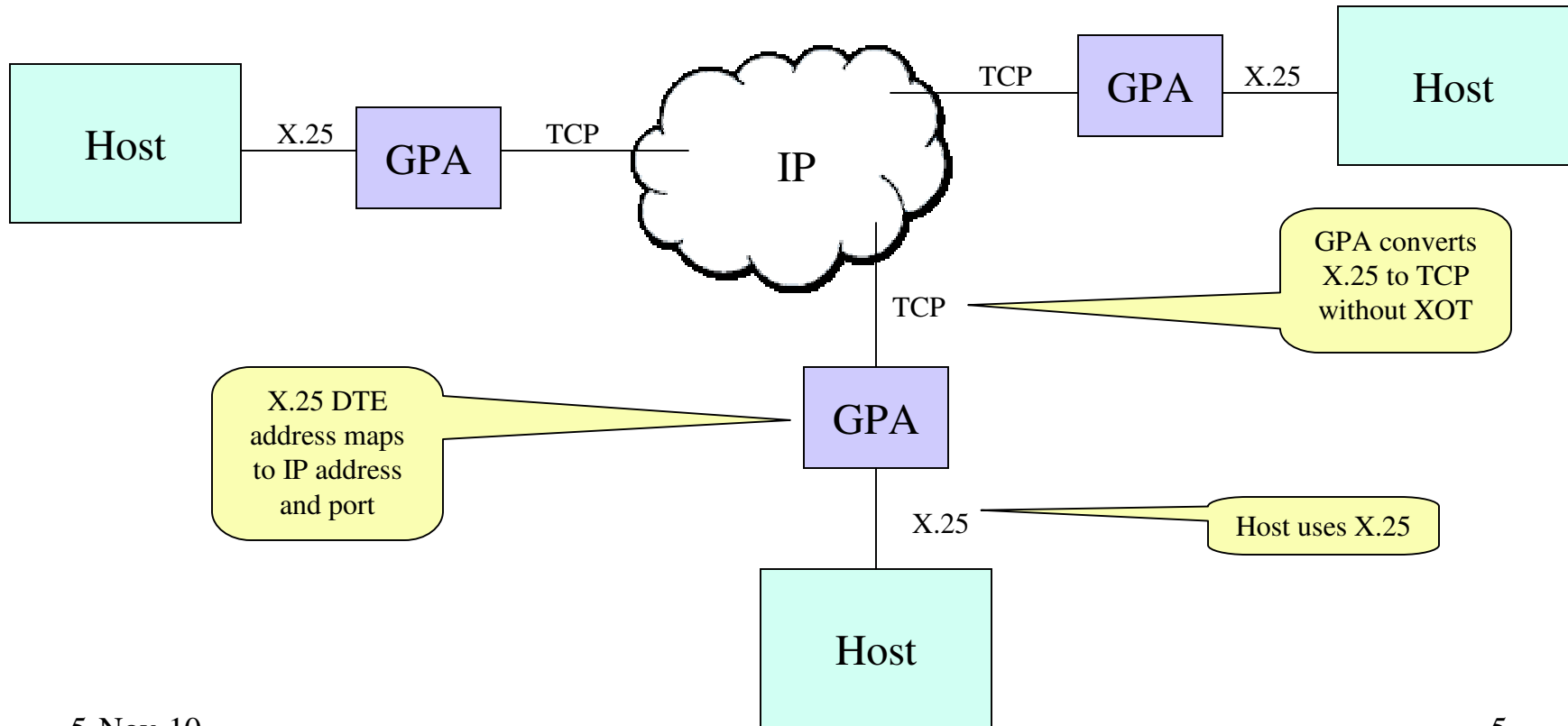


Some Hosts Use TCP



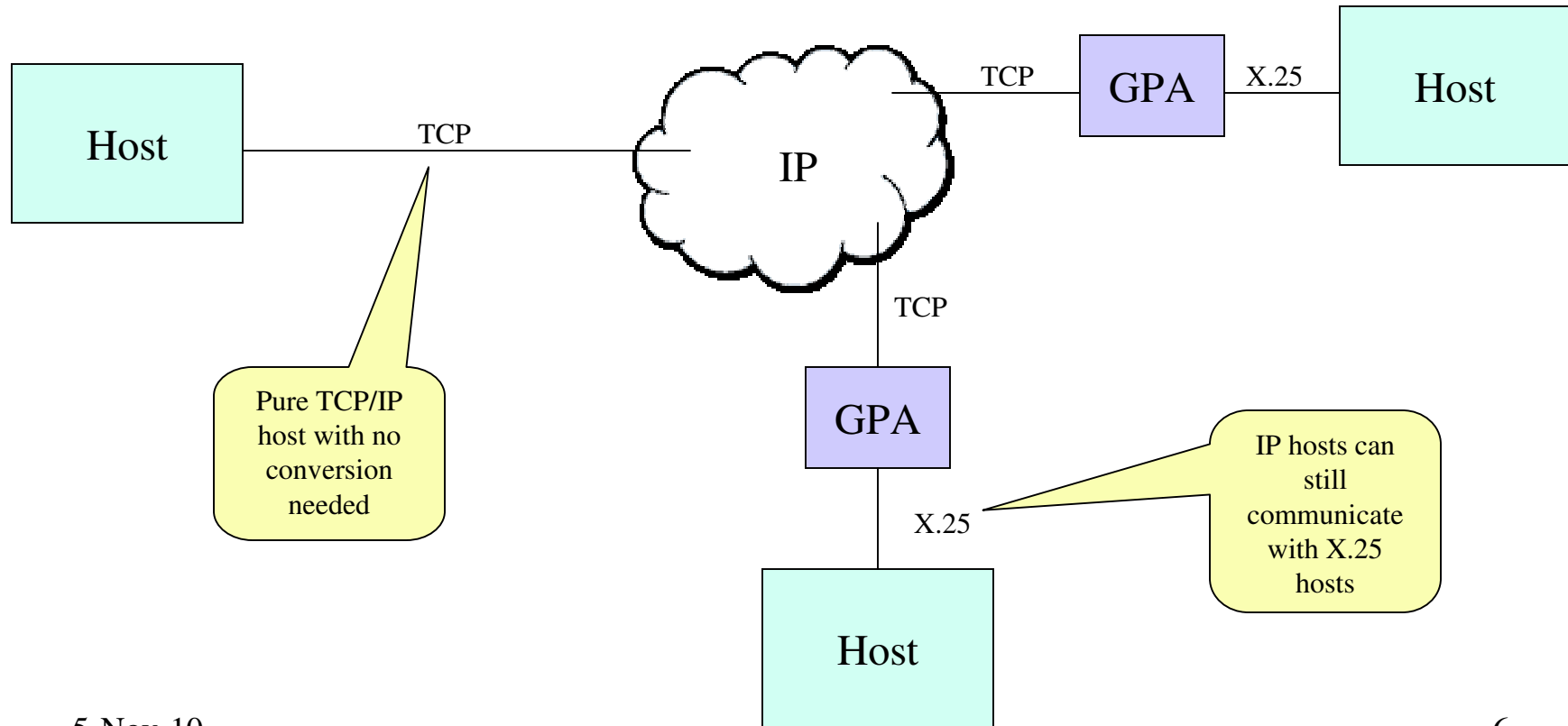
X.25 to TCP

An Alternate Method of Using an IP Back Bone for X.25

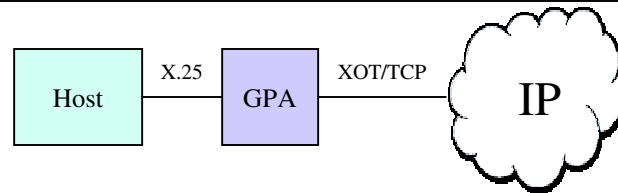


Some Hosts Use TCP Directly

An Alternate Method of Using an IP Back Bone for X.25



Configuring XOT



SVC from X.25 to XOT/TCP

Set the X.25 DTE address

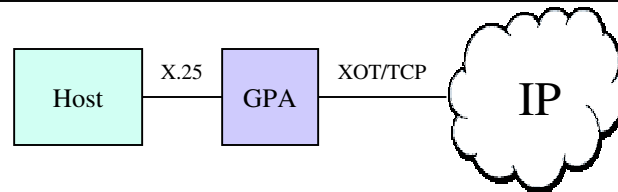
Set the remote XOT GPA host name or IP address

The screenshot shows the 'Connections-X.25-Data' management page in Mozilla Firefox. The 'X.25 to TCP Converter' configuration window is open, displaying the following fields:

Field	Value
Connection ID	x.25-to-xot
Connection type	XOT Server
DTE address	123456
Host name	remote-xot
Redirect address	
Additional facilities	
Redirect facilities	<input checked="" type="radio"/> No <input type="radio"/> Yes
Restore redirect facilities	<input checked="" type="radio"/> No <input type="radio"/> Yes
Reroute	<input checked="" type="radio"/> No <input type="radio"/> Yes
A-bit	<input checked="" type="radio"/> No <input type="radio"/> Yes

Buttons: OK, Cancel, Restore Defaults, Help

Configuring XOT



SVC from XOT/TCP to X.25

The X.25 address can be a wildcard “*”

All incoming XOT/TCP connections are routed to the X.25 port

